

## 48 Albert Hall Mansions Kensington Gore SW7



A magnificent, bright, grand and spacious 2851 square ft six bedrooms, 5<sup>th</sup> and 6<sup>th</sup> floor top floor duplex apartment (with lift) and the benefit of high ceilings and some fabulous views of Hyde Park and the Albert Hall, set in this prestigious portered mansion block. The property is ideally located opposite Hyde Park and near Kensington Gardens and Kensington Palace, the dynamic whole food store, the famous Ivy restaurant and many more wonderful shops and restaurants and amenities of South Kensington and Kensington. The property is also close to Knightsbridge and the world-famous Harrods department store.

5<sup>th</sup> floor- Entrance Hall. Ample storage. Reception Room. Dining room. Kitchen. Guest Cloakroom. Study/TV Room. Master Bedroom with ensuite bathroom and walk in closet area. Second bedroom with en-suite bathroom and storage room.

6<sup>th</sup> floor – 3 further bedrooms with ensuite bathroom and shower room and lots more storage.

**£5,500,000 stc**

**Share of Freehold**

**Mob: 0788 770 3777**

2 Eaton Gate, Belgravia, London, SW1W 9BJ

enquiries@chasemoreproperty.com [www.chasemoreproperty.com](http://www.chasemoreproperty.com)





#### Important notice

Readers should note that these sales particulars are a guide only. Whilst care has been taken in their preparation, no representation is made nor responsibility accepted by chasemore property limited for the whole or any part of the information contained. All descriptions are believed to be correct but readers may only rely upon their own inspection, investigations or otherwise as to the accuracy of the particulars. The vendor may provide details, verbally or written, of lease, ground rent, service charges, rentals, planning, managing agents information, any consents that would be required, alterations to and uses of the property. These are for guidance only and may not be relied upon without confirmation from a solicitor that they are accurate. These particulars of sale do not constitute any part of an offer or contract. No description either verbal, written or otherwise given, either contained in these particulars of sale or otherwise, may be relied upon as a statement or representation of fact by chasemore property limited and do not negate the requirement to undertake your own full legal due diligence. The text, photographs, cgi, videos, and drone technology are all for guidance only. They should not be relied upon for carpets and furnishing. Any fixtures and fittings, whether fitted or not, are deemed removable by the vendor. Chasemore property limited does not give any authority to its agents, other estate agents, representatives, employees or any third party to make representations about the property. Therefore any information provided by such third party whether verbally, written or otherwise may not under any circumstances be relied upon as a statement or representation of fact by chasemore property limited and does not negate the requirement for full legal due diligence.

#### Disclaimer for floor plan

All measurements are approximate and for illustration purposes only.

**Mob: 0788 770 3777**

2 Eaton Gate, Belgravia, London, SW1W 9BJ

enquiries@chasemoreproperty.com [www.chasemoreproperty.com](http://www.chasemoreproperty.com)





**Mob: 0788 770 3777**

2 Eaton Gate, Belgravia, London, SW1W 9BJ

enquiries@chasemoreproperty.com [www.chasemoreproperty.com](http://www.chasemoreproperty.com)





**Price:** £5,500,000 stc  
**Tenure:** Share of freehold  
**Service Charge:** TBC  
**Ground Rent:** TBC

## EPC

Score	Energy rating	Current	Potential
92+	A		
81-91	B		
69-80	C		
55-68	D		59   D
39-54	E	54   E	
21-38	F		
1-20	G		

**Mob: 0788 770 3777**

2 Eaton Gate, Belgravia, London, SW1W 9BJ

enquiries@chasemoreproperty.com www.chasemoreproperty.com



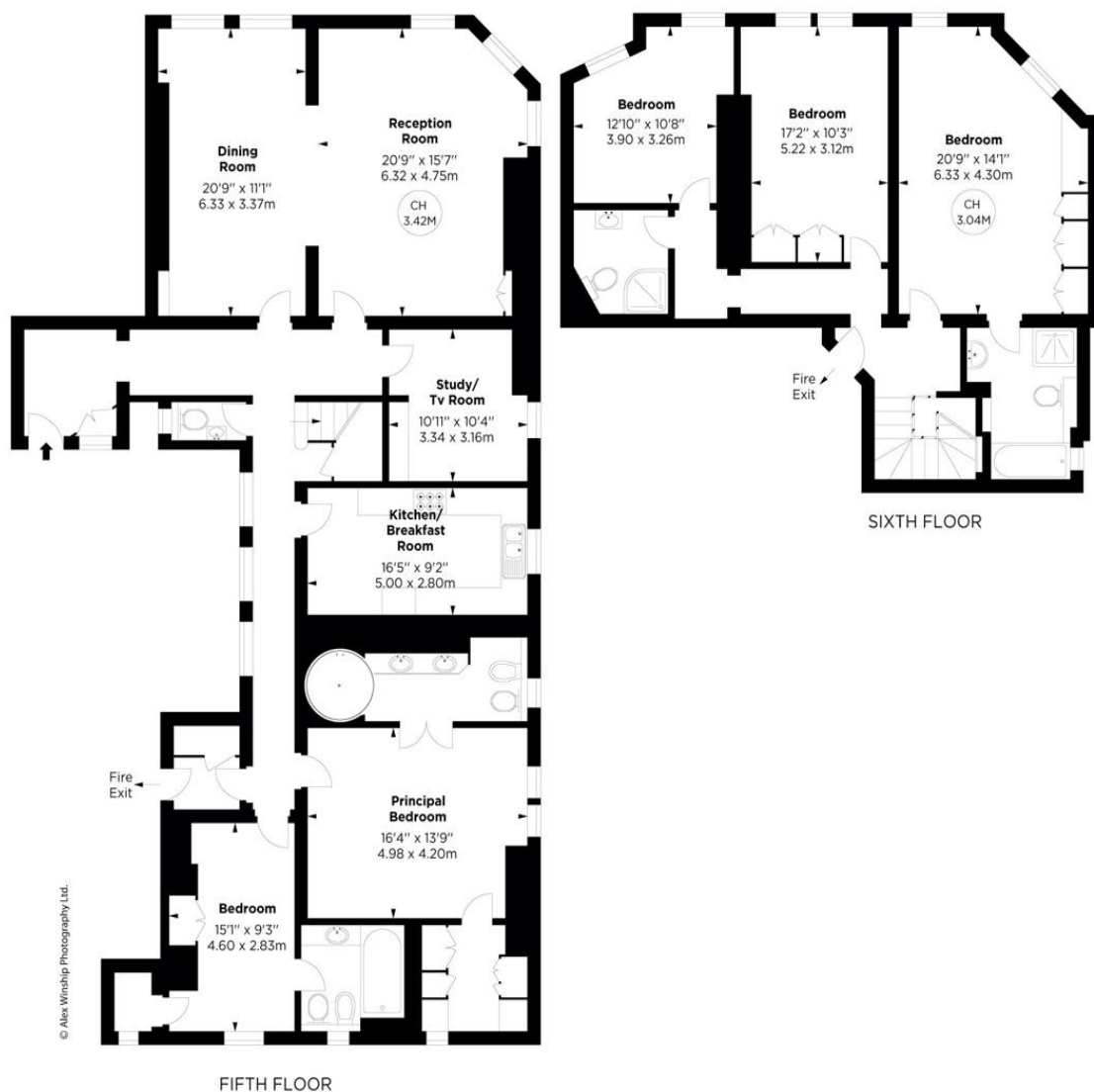
## FLOOR PLAN

### Albert Hall Mansions, SW7

APPROX. GROSS INTERNAL AREA \*  
2851 Sq Ft - 264.86 Sq M

This floorplan is for GUIDANCE ONLY and NOT FOR VALUATION purposes.

Key :  
CH - Ceiling Height



© Alex Winship Photography Ltd.

**ALEX WINSHIP**  
Photography  
© Alex Winship Photography Ltd.

\* Floorplan for guidance only, not to scale or valuations purposes. It must not be relied upon as a statement of fact. All measurements and areas are approximate and have been prepared in accordance with the current edition of the RICS Code of Measuring Practice.



**Mob: 0788 770 3777**

2 Eaton Gate, Belgravia, London, SW1W 9BJ

enquiries@chasemoreproperty.com www.chasemoreproperty.com

